



# MONTHLY MEMBERSHIP PROGRESS REPORT

Results as of: 11/30/2015

Multiple District 12

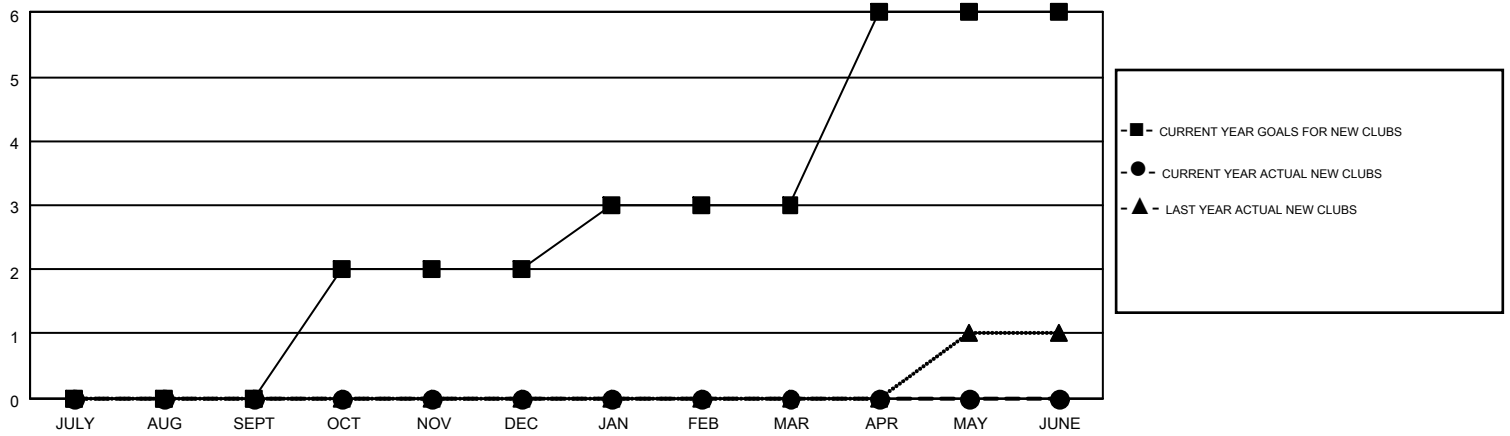
LOCATION: TENNESSEE

GMT: HARVEY WHITLEY

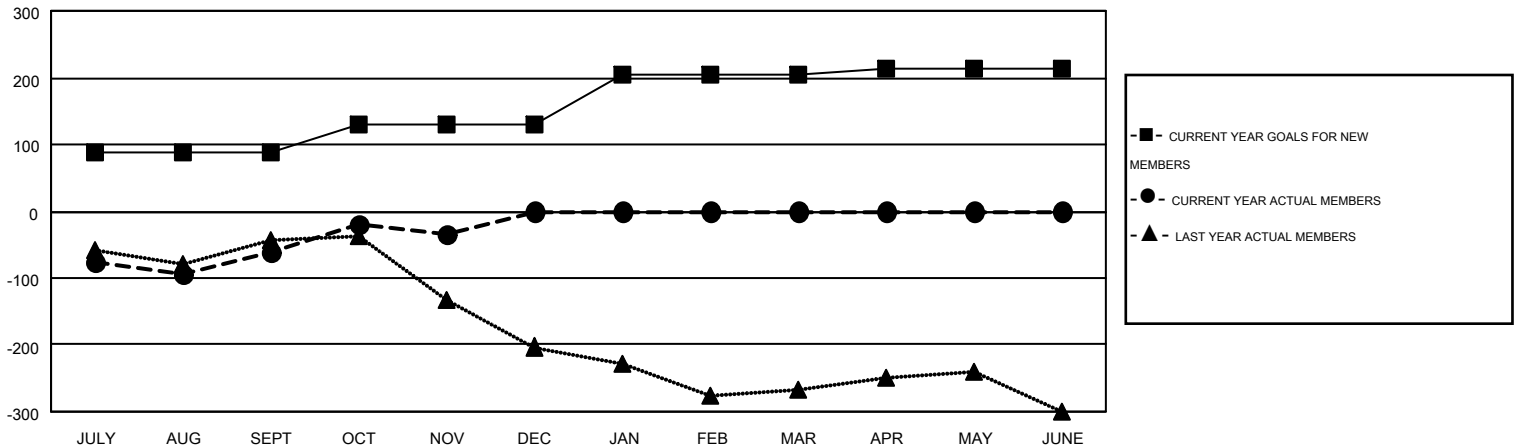
GMT CA 1

Clubs					Members				
RESULTS FOR 2015-2016					RESULTS FOR 2015-2016				
QUARTER	NEW CLUB GOAL	NEW CLUBS	DROPPED CLUBS	NET GAIN/LOSS	QUARTER	NEW MEMBER GOAL	CHARTER AND NEW MEMBERS ADDED	DROPPED MEMBERS	NET GAIN/LOSS
JULY/AUG/SEPT	0	0	3	-3	JULY/AUG/SEPT	89	170	232	-62
OCT/NOV/DEC	2	0	0	0	OCT/NOV/DEC	42	146	119	27
JAN/FEB/MAR	1	0	0	0	JAN/FEB/MAR	73	0	0	0
APR/MAY/JUNE	3	0	0	0	APR/MAY/JUNE	9	0	0	0

GOALS AND ACTUAL NEW CLUBS CUMULATIVE



GOALS AND ACTUAL MEMBERS CUMULATIVE



DROPPED CLUBS: 3	84 CLUBS OF 213 ADDED 1 OR MORE NEW MEMBERS	<u>GENDER DISTRIBUTION</u>	
		MALE	3,372 (64.85%)
<u>DROPPED MEMBERS</u>		FEMALE	1,828 (35.15%)
		<a href="#">CLICK HERE FOR HEALTH ASSESSMENT DATA</a>	
DECEASED	34	FAMILY UNIT MEMBERS	1,003
CLUB CANCELLED	16	HEAD OF HOUSEHOLD	496
OTHER	301	NON-HEAD OF HOUSEHOLD	507
<b>TOTAL</b>	<b>351</b>		